

# **Peatland restoration activities in Finland and exchange of experience trip to the project sites**

**Jenni Hultman**  
**26.9.2024**





# LIFE PeatCarbon sites in Pallas



## Matorova Mire

Catchment 556 ha

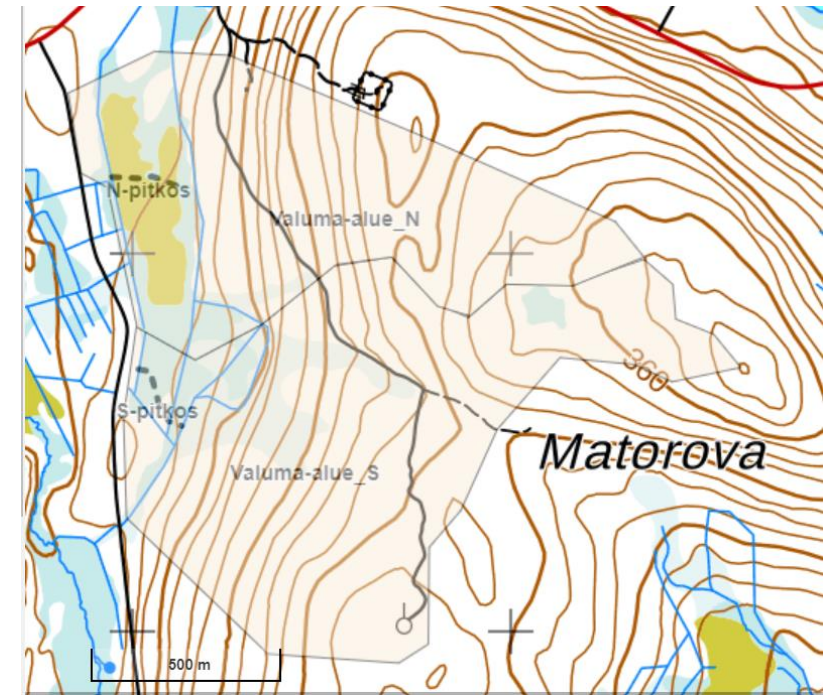
Effective area 183 ha



## Välisuo Mire

Catchment area 156 ha

Effective area ca. 24 ha





# Monitoring sites in Pallas



Monitoring of:

- GHG twice a month during snow free period, once a month in the winter
- Vegetation
- Nutrients
- Hydrology
- Microbial communities and activity





# Restoration actions

- Tree harvest and ditch filling with harvest material
- Blocking ditches with dams
- Aims:
  - reach the tree density before drainage
  - Build dams to fill the ditches and allow water table to rise in peatlands











  
Luke



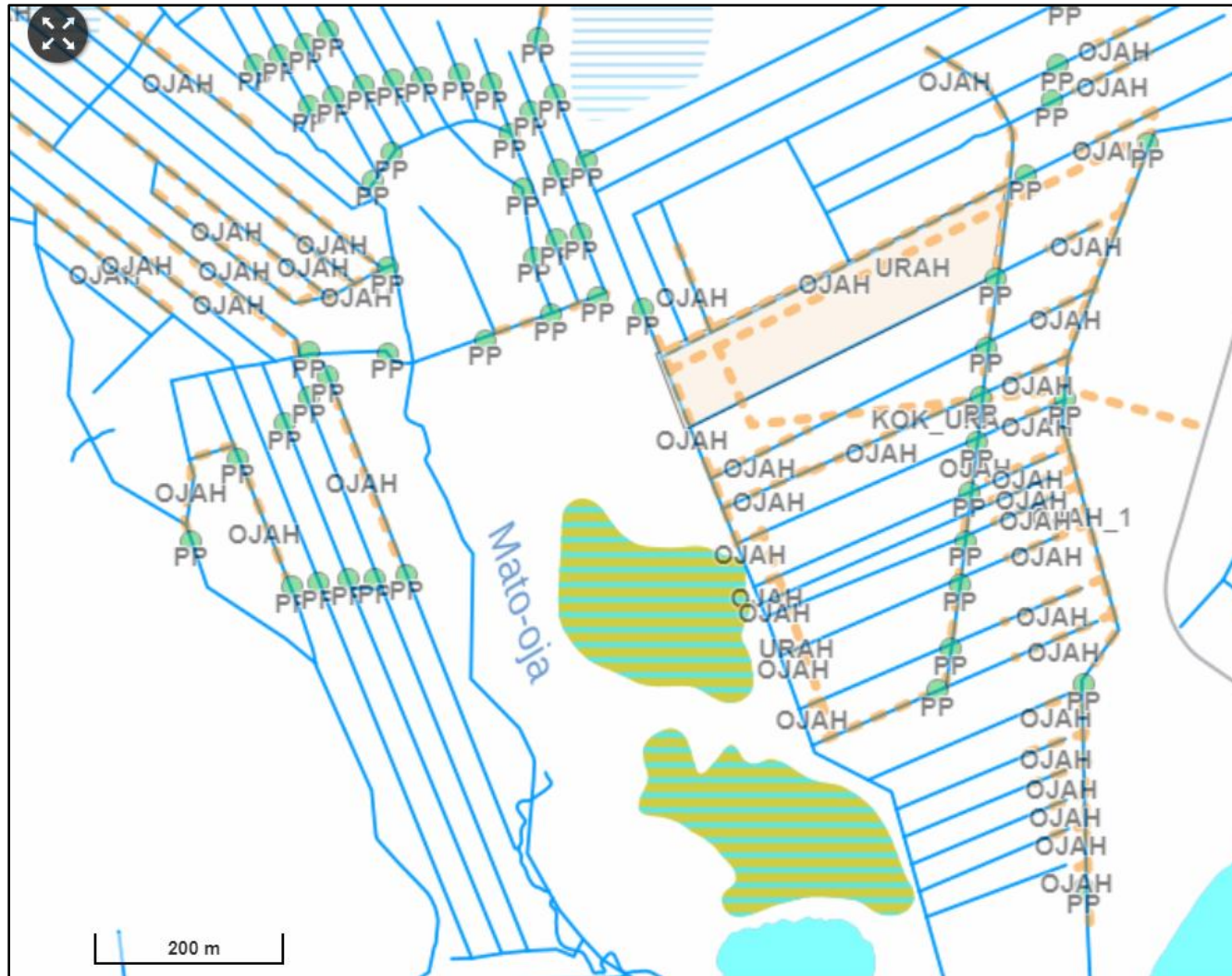


Harvest finished in June 2024





# Examples of restoration plan for dams



- PP = wooden dam
- TP = peat dam
- OT = filled ditch



# Dams in July 2024













# Exchange of experience trip 1-3.7.2024



- Team from Latvia visited Pallas sites
- Hosts: Luke, FMI, University of Oulu and Metsähallitus











